



LENS RTLS

Location Enabled Notification System



Improving Patient And Staff Experiences

Skytron LENS is a Real-Time Location System (RTLS) specifically designed to instantly boost productivity, lower equipment costs, and improve workflow. With this system, LENS offers a flexible design framework with customizable accuracy from zone to chair level that is easy to use and install providing administrators real-time, actionable information to improve business processes that impact patient care and operational efficiency. LENS limits staff frustration by seamlessly integrating into daily routines.

A reliable and intuitive way to measure equipment use while informing designated staff about:

- Location, status and movement of assets
- Equipment par levels fall below safety stock limits
- Rental contracts are about to expire
- Area entry and exit alerting
- Time to perform scheduled preventative maintenance



Infection
Control



Patient
and Staff
Locating



Asset
Tracking and
Management

Streamline Workflows. Reduce Waste.

Enhance awareness and visibility for patient safety and operational efficiency

- Find critical resources (assets and people)
- Know the status of resources
- Create a more efficient environment for staff
- Monitor, control and optimize inventory
- Improve workflow and streamline business processes
- Implement data-driven improvement

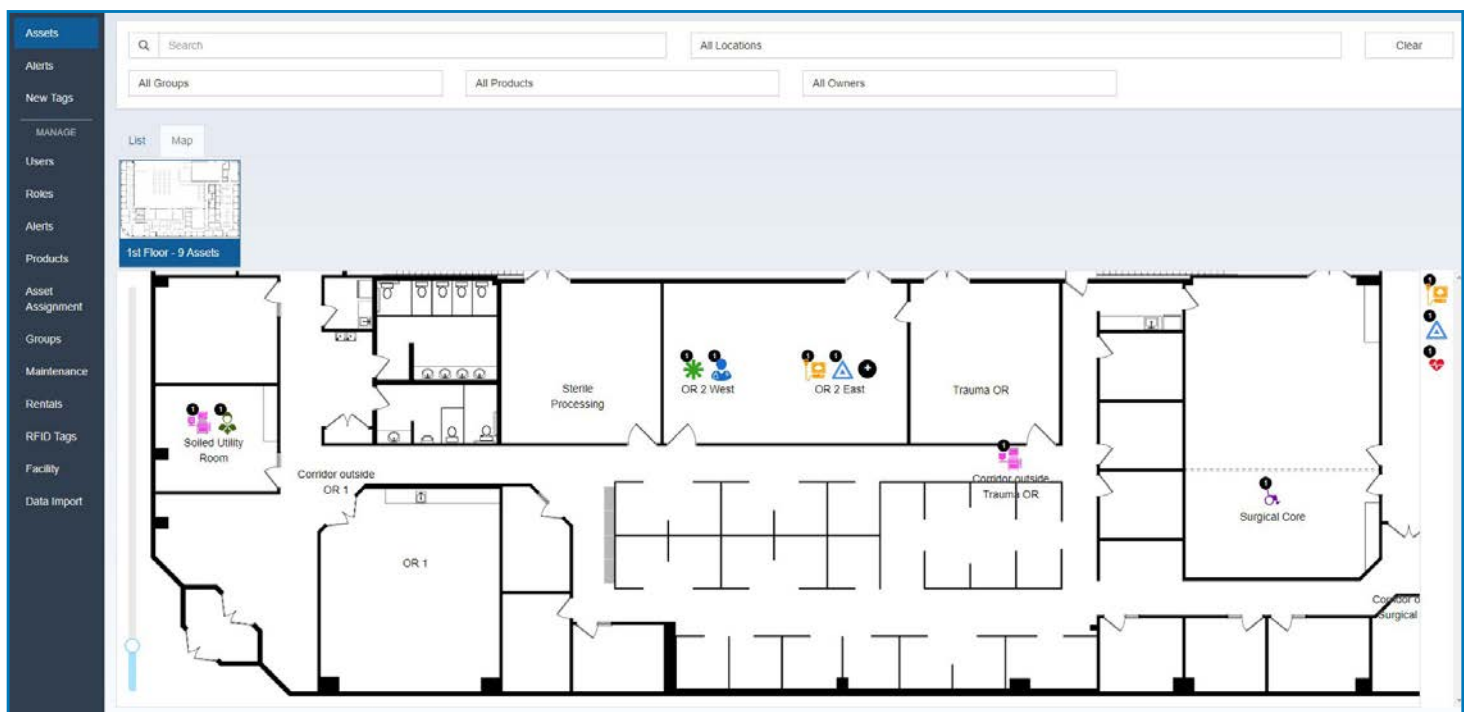
Par Level Management Refresh

Location: Asset Group: Alert Triggered: Start Date: End Date:

Par Level Current Status

Status:

| asset group | location | min | max | count | status | reported time |
|----------------|--------------------------------------|-----|-----|-------|----------|----------------|
| IV Pumps | Hospital First Floor Soiled Utility | 2 | 3 | 0 | Shortage | 06/06/18 19:52 |
| IV Pumps | Hospital Second Floor Soiled Utility | 1 | 2 | 3 | Surplus | 11/06/18 19:00 |
| All Knee Rests | Hospital First Floor Clean Room | 1 | 2 | 3 | Surplus | 06/06/18 19:49 |
| Knee Rests | Hospital First Floor Operating Room | 3 | 10 | 0 | Shortage | 11/06/18 14:03 |
| Knee Rests | Hospital Second Floor Supply | 0 | 1 | 0 | OK | 11/06/18 14:03 |
| Knee Rests | Hospital Second Floor Storage Core | 0 | 2 | 0 | OK | 11/06/18 14:03 |
| Knee Rests | Hospital Second Floor Clean Room | 1 | 10 | 0 | Shortage | 11/06/18 14:03 |
| Knee Rests | | 1 | 2 | 3 | Surplus | 11/06/18 14:03 |





Assets

Alerts

New Tags

MANAGE

Users

Roles

Alerts

Products

Asset Assignment

Groups

Maintenance

Rentals

RFID Tags

Facility

Data Import

Search

All Locations

All Groups

All Products

All Owners

List Map

| ACN1 | RFID | Product | Location |
|-------------------|---------|----------------|--|
| ▶ Video Cart 1 | 313529 | Video Cart | Hospital > 1st Floor > OR 2 West |
| ▶ Infusion Pump | 307339 | Infusion Pump | Hospital > 1st Floor > OR 2 East |
| ▶ X1234 | 1947846 | Wheelchair | Hospital > 1st Floor > Surgical Core |
| ▶ W1234 | 1947994 | Ultrasound | Hospital > 1st Floor > OR 2 East |
| ▶ 335-9968 | 1947532 | Telemetry Unit | Hospital > 1st Floor > Surgical Core |
| ▶ 49-8889974 | 1947247 | Crash Cart | Hospital > 1st Floor > OR 2 East |
| ▶ 335-6664 | 1947484 | Telemetry Unit | Hospital > 1st Floor > Soiled Utility Room |
| ▶ Smith, Josie | 1944322 | Staff, Surgery | Hospital > 1st Floor > Surgical Core |
| ▶ Daniel, Richard | 1947632 | Staff, EVS | Hospital > 1st Floor > Soiled Utility Room |

10 20 50

Asset Tracking

Real-time location of critical mobile assets. Reduce search time and staff frustration. Increase patient care quality and experience. Easily locate assets for preventive maintenance cycles.

"Since implementation, we are able to deliver equipment direct to the patient's bedside in a timely fashion and provide quality patient care."

- Asst. VP of Patient Care Services

Asset Management

Identify, manage and measure asset status, utilization rates, automated alerts, and par levels.

"It allows me to attend to my patients instead of looking all over the hospital for equipment. Especially here in the ICU, it's a matter of life or death."

- ICU Staff Nurse

Assets

Alerts

New Tags

MANAGE

Users

Roles

Alerts

Products

Asset Assignment

Groups

Maintenance

Rentals

RFID Tags

Facility

Search

All Locations

All Alerts

All Groups

All Products

List Map

| Alert | Type | ACN1 | RFID | Product | Location | Alert Time | State |
|-------------------|--------------|------|---------|--------------------------|--|-----------------|----------|
| ▶ All Buttons | Button Press | ST1 | 2501054 | Surgical Table | Hospital > First Floor > River Street Entrance | 2018-05-16 1... | Resolved |
| ▶ All Buttons | Button Press | W1 | 1843295 | Wheelchair | 4th Floor, East Wing | 2018-07-02 1... | Resolved |
| ▶ Fridge Tempe... | Temperature | T1 | 747009 | Refrigerator | Hospital > First Floor > Reception | 2018-10-15 1... | Active |
| ▶ All Buttons | Button Press | K2 | 2118676 | 18in Foot Extension | Hospital > First Floor > River Street Entrance | 2018-10-17 2... | Resolved |
| ▶ All Buttons | Button Press | K1 | 773900 | Staff, Environmental ... | Hospital > First Floor > Reception | 2018-10-17 2... | Resolved |
| ▶ All Buttons | Button Press | W2 | 1804738 | Wheelchair | Hospital > First Floor > River Street Entrance | 2018-07-12 1... | Resolved |
| ▶ All Buttons | Button Press | W4 | 2013180 | Wheelchair | Hospital > First Floor > River Street Entrance | 2018-12-04 3... | Resolved |

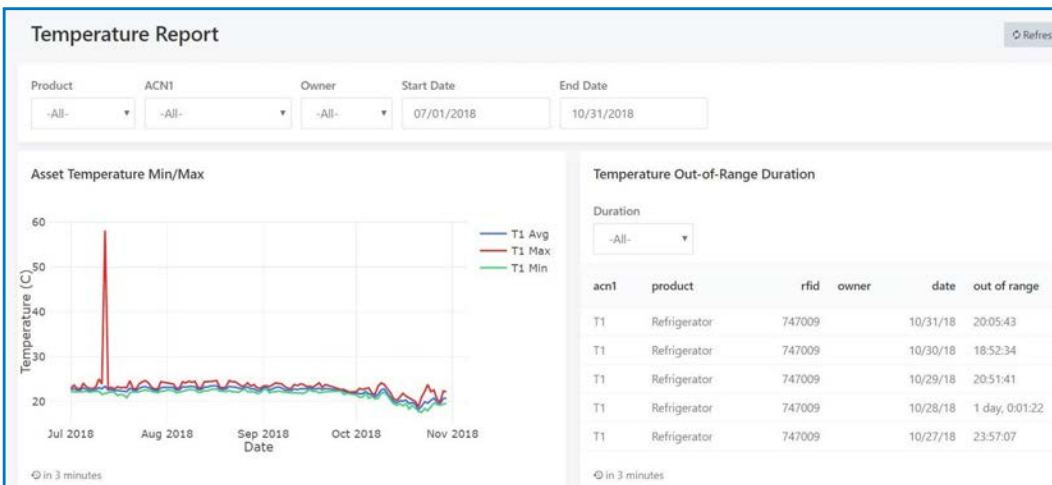
10 20 50

Staff and Patient Locating

Maximize the most critical asset, your staff, by assessing workflow for bottlenecks and reducing unnecessary pages for an enhanced patient experience. Able to review patient location history to examine care delivery, trend and identify improvement opportunities.

"A staff duress button provides the ability for the staff to summon help at some point of the procedure."

-Asst. VP of Patient Care Services



Environmental Monitoring

Eliminate labor-intensive manual temperature logging, automate active alerting, and comply with regulatory requirements.

"The solution has allowed us to deliver consistent quality care throughout our facility."

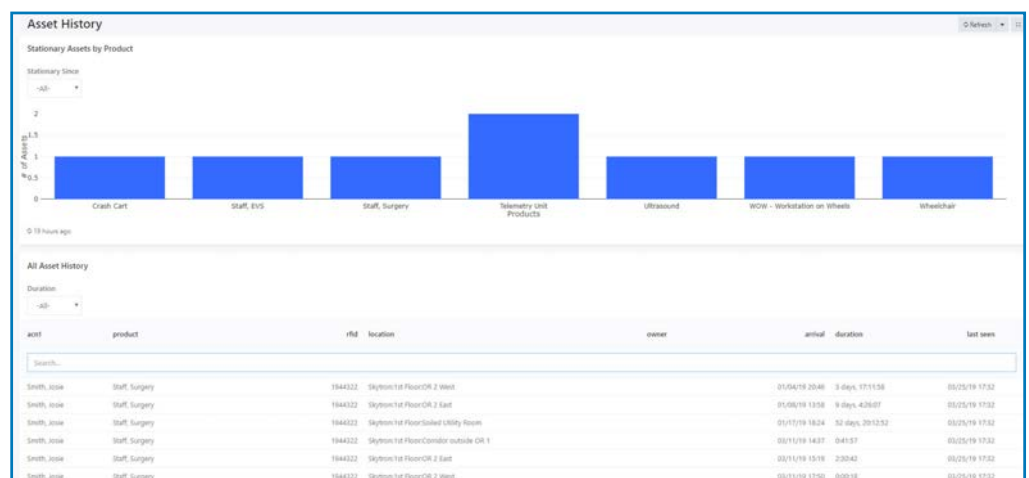
- Asst. VP of Patient Care Services

Infection Control

Access interaction history between patients, staff and equipment to contain infectious outbreaks.

"We can also see the history of the equipment, where it has been, who it has been on, what room it has been in."

- Administrative Assistant



Optimize Your Investment

Skytron is a full-service provider with over 12 years of healthcare RTLS expertise. We not only guide our clients through the configuration and implementation of the solution that best meets their needs, but we also fully support both hardware and software. Skytron continues to review the solution with you regularly to ensure long term optimization and system benefits through an inclusive Service Level Agreement (SLA).



Comprehensive Support

Available services include

- System design
- Implementation
- Battery management
- Ongoing network support
- Remote monitoring
- Data storage
- Software support
- User training
- Regular on-site visits
- Recurring business reviews
- 24/7 emergency technical support





Circle of Clinical Business Solutions



Sky Vision



Flat Screen Displays



LENS-RTLS Solutions

Clinical Intelligence Solutions
Real-Time Decision Support
Performance Improvement
Enhanced Workflow



OR Cockpit

Skytron is the Healthcare Efficiency Specialist, providing full-room solutions of capital equipment, architectural and real-time information systems for Medical, Surgical, Sterile Processing, and Infection Prevention. Our solutions enhance the utilization of people, facilities, and capital because they are designed with the user in mind and have a low, long-term cost of ownership.

To learn more, visit our website at www.skytron.com



5085 Corporate Exchange Blvd. SE
Grand Rapids, MI 49512
1.800.SKYTRON (759-8766)
email: info@skytron.com
www.skytron.com



REVO 3-19
PN L2-010-166